



@alexandrasamson

@shelleyjain

@nurse.lala

@nursing_sprout

@karissarentfrow

@chillmomvibes

@conniethern

@dagoodnurse

@drcurlsncheetos

@dominique_iguzar

today's vision

@elysebigler.fitpa

@elysebigler.fitpa

@chillmomvibes

@kate_scoville

today's vision

@mustafaabdelhak

@neophytenurse

@niklebourgeois

@nurse_sami_in_training

@exotic.pet.vet

@thedangpa

@nurse.xtinaa

@dagoodnurse

@nursing_sprout

@shelleyjain

alley West Uniforms

@thelittleeyedoctor

@floss_dentalstudio

@alexandria_lightning

@glennalyn_may

@dr.flossophy

@valmmy676

@lanahreimerr

crystal

@conniethern


@nursing_sprout

@llamas.and.lattes

@cocomicchon

@healthmodelaney

FALL 2020

 Animal fur & hair do not stick to 4-Stretch.

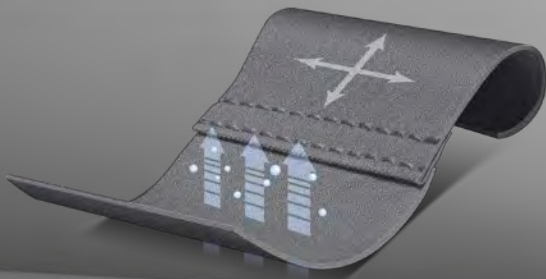


Four-Stretch⁴

WONDERWINK FOUR STRETCH[®] FEATURES:

- A revolution in **easy care** fabric technology
- Fabric wicks moisture for **maximum comfort** and **breathability**
- Mechanical stretch allows for **ease of movement**
- Fabric retains its **color vibrancy** after washing
- WonderWink's **signature utility features** such as secret pockets, utility loops and signature ID bungee loop
- Women's Modern Fit and True-Plus Fit

HIGH
PERFORMANCE
LOW
MAINTENANCE



6214 EGP
5214 EGP

6214
Women's
Sporty V-Neck Top



5214
Women's
Sporty
Cargo Pant



7004
Women's
4-Stretch
Lab Coat



8114
Women's
Sporty Button Front
Jacket



6214

Women's Sporty V-Neck Top



Women's Modern Fit and True-Plus Fit
100% Polyester

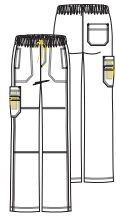
- Two front lower pockets with hidden mesh pocket and hidden three part utility loop.
- Angled yoke at shoulders.
- Locker loop and logo at stylized back yoke.
- Shaping panels at waist and sides.
- Vented sides.

XS - 3X
4X - 5X **Y**
(Size M length: 27 1/4")

WHITE - WHT Y D
black - BLK Y T
pewter - PEW Y D
navy - NVY Y T
royal - RYL Y T
ceil blue - CBL Y T
hunter - HTR Y T
caribbean blue - CRB Y T
real teal - RTL Y T
galaxy blue - GBL Y T
eggplant - EGP D
wine - WIN Y T

5214

Women's Sporty Cargo Pant



Boot Cut

Women's Modern Fit and True-Plus Fit
100% Polyester

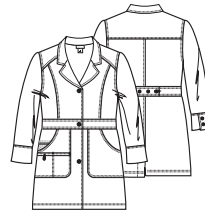
- Full elastic waistband with WonderWink drawstring.
- Two front reinforced seam pockets, one double cargo pocket with hidden mesh cell phone pocket, and one back patch pocket.
- Forward side seam.
- Double knee stitch detail.
- Vented bottom.

XS - 3X, 4X - 5X **Y**
Petite: XS - 3X **P**
Tall: XS - 3X **T**
(Size M leg opening: 9 1/4")

WHT Y P T D
BLK Y P T T
PEW Y P T D
NVY Y P T T
RYL Y P T T
CBL Y P T T
HTR Y P T T
CRB Y P T T
RTL Y P T T
GBL Y P T T
EGP P T D
WIN Y P T T

7004

Women's 4-Stretch Lab Coat



Women's Modern Fit and True-Plus Fit
100% Polyester

- Two front lower pockets including WonderWink signature pocket with signature ID bungee loop and mesh coin pocket.
- Princess seaming and a mock belt at the waist.
- An adjustable back button closure.
- Vented back.

XS - 2X
(Size M length: 32")

WHT D
BLK T

8114

Women's Sporty Button Front Jacket



Women's Modern Fit and True-Plus Fit
100% Polyester

- Two front lower pockets including one WonderWink signature triple pocket.
- Dropped shoulder.
- Front princess seams for shaping.
- Rib-knit cuff that can be worn tucked in or out.

XS - 3X
(Size M length: 28 1/4")

WHT D
BLK D
PEW T
NVY D