



@alexandrasamson

@shelleyjain

@nurse.lala

@nursing_sprout

@karissarentfrow

@chillmomvibes

@conniethern

@dagoodnurse

@drcurlsncheetos

@dominique_iguzar

today's vision

@elysebigler.fitpa

@elysebigler.fitpa

@chillmomvibes

@kate_scoville

today's vision

@mustafaabdelhak

@neophytenurse

@niklebourgeois

@nurse sami in training

@exotic.pet.vet

@thedangpa

@nurse.xtinaa

@dagoodnurse

@nursing_sprout

@shelleyjain

alley West Uniforms

@thelittleeyedoctor

@floss_dentalstudio

@alexandria_lightning

@glennalyn_may

@dr.flossophy

@valmmy676

@lanahreimerr

crystal

@conniethern

@nursing_sprout

@llamas.and.lattes

@cocomicchon

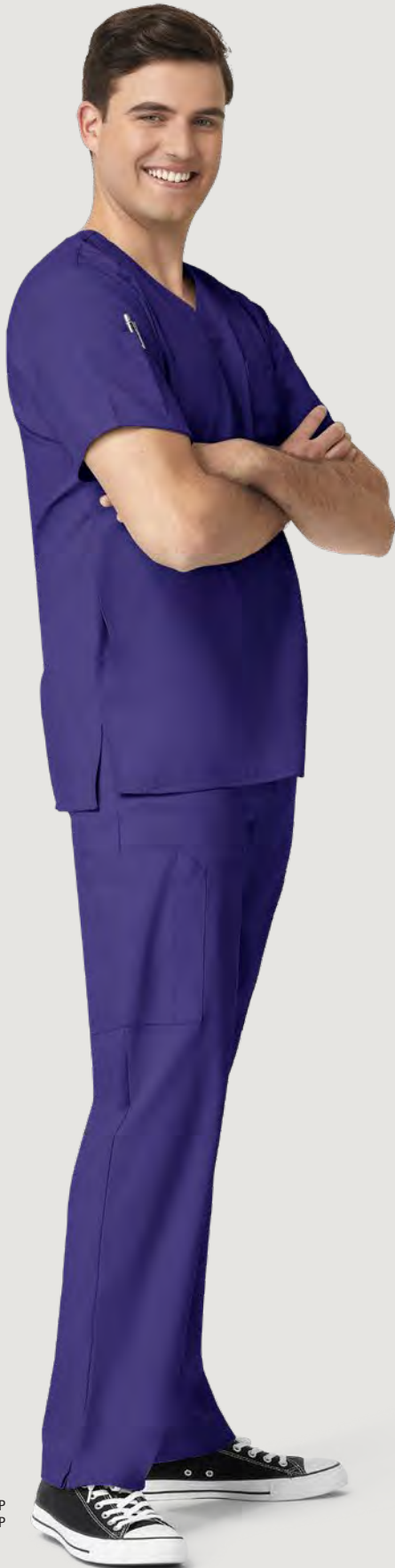
@healthmodelaney

FALL 2020



WI23™

THE ESSENTIALS THAT WORK



6355 GRAP
5355 GRAP



8155 TEAL
5555 TEAL



W1 FASHION FIT



Feel comfortable and confident in distinctive styles with an unsurpassed fit. Choose from silhouettes that are tailored for all shapes and body types. Ranging from ladies' petites to True-Plus Fit sizing, each garment delivers a polished and slimming appearance. Men's styles follow suit with a Modern Fit and understated style.

Women's Modern/Classic Fit						True-Plus Fit				
XXS	XS	S	M	L	XL	1X	2X	3X	4X	5X

Revolutionizing the industry, these styles are offered in True-Plus Fit sizing. Available in 1X-5X, each garment is fit to comfortably contour and flatter the curves of your body. Eliminate the tugging, the pulling, and the frustration with our attention to fit details such as longer sleeve lengths, higher pant rises, and curvier hips. Find the true-fit for you!

Watch our video at [YouTube](#) to learn more about W123 fit.
 Keyword: "WonderWink W123"



W2 FABRIC



Leading Edge MicroFiber Technology:
 Smart 4-way stretch fabric constructed from flex-adaptive yarn synchronizes with your every movement. Quick-dry wicking fabric pulls moisture away from your body to keep you cool, fresh, and temperature regulated.



Dimensional Stability:
 With no shortage of resiliency, this fabric is shrink proof, fade proof, wrinkle resistant, and able to withstand repeated wash and wear.

W3 FUNCTION



Standout styling paired with functional utility creates superb organization using spacious pockets, multiple utility loops, and thoughtful trims.



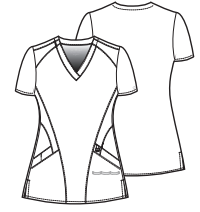


WI23™

GROUP FRIENDLY

6155

Women's
Stylized V-Neck Top



6655

Men's
Colorblock Top



5655

Men's
Cargo Jogger Pant

NEW COLORS

CARIBBEAN BLUE

WINE



Women's Modern Fit and True-Plus Fit
100% Microfiber Poly 4-way Stretch



Two front lower top loading double pockets including sectional pocket, cell phone pocket, and hidden three part utility loop.



Shoulder badge loop.



Vented sides.



WonderWink silicone ring.

XXS - XL, Plus: 1X - 5X
(Size M length: 27 ¼")

white - WHIT

black - BLAC

pewter - PEWT

navy - NAVY

royal - ROYA

cell blue - CEIL

grey - GREY

olive - OLIV

hunter - HUNT

caribbean - CARI

teal - TEAL

galaxy blue - GALA

grape - GRAP

eggplant - EGGP

wine - WINE

hot pink - HTPK

red - REDT

khaki - KHAK

GROUP FRIENDLY

6255

Women's
Basic V-Neck Top



Women's Classic Fit and True-Plus Fit
100% Microfiber Poly 4-way Stretch



Two front lower top loading pockets with hidden three part utility loop.



Shoulder badge loop.



Vented sides.



WonderWink silicone ring.

XXS - XL, Plus: 1X - 5X
(Size M length: 28 ¼")

WHIT

BLAC

PEWT

NAVY

ROYA

CEIL

NEW!

grey - GREY

HUNT

CARI

TEAL

NEW!

grape - GRAP

WINE

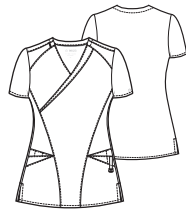
REDT

KHAK

GROUP FRIENDLY

6455

Women's
Mock Wrap Top



Women's Modern Fit and True-Plus Fit
100% Microfiber Poly 4-way Stretch



Two front lower top loading triple pockets including sectional pocket, cell phone pocket, utility pocket and pen slot.



Asymmetrical mock wrap top.



Shoulder badge loop.



Vented sides.



WonderWink silicone ring.

XXS - XL, Plus: 1X - 5X
(Size M length: 27")

WHIT

BLAC

PEWT

NAVY

ROYA

CEIL

HUNT

CARI

GALA

GRAP

EGGP

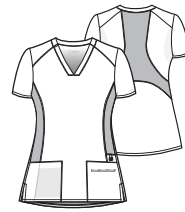
WINE

HTPK

GROUP FRIENDLY

6555

Women's
Flex-Back Stylized V-Neck Top



Women's Modern Fit and True-Plus Fit
100% Microfiber Poly 4-way Stretch



Two front pockets with inside pocket and hidden utility loops.



Modified sporty V-neck design.
Shoulder badge loop.



Dyed-to-match knit racer back design with drop tail hemline and side knit paneling for a slimming effect.



Vented sides.



WonderWink silicone ring.

XXS - XL, Plus: 1X - 5X
(Size M length front: 26 ¾", back: 28 ½")

BLAC

PEWT

NAVY

ROYA

CEIL

HUNT

CARI

TEAL

WINE

REDT

GROUP FRIENDLY

8155

Women's
Crew Neck Warm Up Jacket



Women's Modern Fit and True-Plus Fit
100% Microfiber Poly 4-way Stretch



Two front lower top loading lower pockets with hidden three part utility loop.



Shoulder badge loop.



Vented sides.



WonderWink silicone ring.

XXS - XL, Plus: 1X - 5X
(Size M length: 28 ¼")

WHIT

BLAC

PEWT

NAVY

ROYA

CEIL

NEW!

HUNT

CARI

NEW!

TEAL

WINE

GROUP FRIENDLY

5155

Women's
Flat Front Double Cargo Pant



Straight Leg

Women's Modern Fit and True-Plus Fit
100% Microfiber Poly 4-way Stretch



Flat front full elastic waist with inside webbed drawstring.



Two front slant pockets, two stylized cargo pockets, one cell phone pocket, and two back pockets with pen slot.



Utility loop at waist.



Vented bottom.

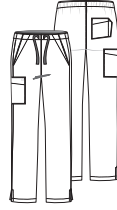
XXS - XL, Plus: 1X - 5X
Petite: XXS - XL, Plus Petite: 1X - 3X (P)
Tall: XS - XL, Plus Tall: 1X - 3X (T)
(Size M leg opening: 7 ¾")

white - WHIT	(P) (T)
black - BLAC	(P) (T)
pewter - PEWT	(P) (T)
navy - NAVY	(P) (T)
royal - ROYA	(P) (T)
ceil blue - CEIL	(P) (T)
grey - GREY	(P) (T)
olive - OLIV	(P) (T)
hunter - HUNT	(P) (T)
caribbean - CARI	(P) (T)
teal - TEAL	(P) (T)
galaxy blue - GALA	(P) (T)
grape - GRAP	(P) (T)
eggplant - EGGP	(P) (T)
wine - WINE	(P) (T)
hot pink - HTPK	(P) (T)
red - REDT	(P) (T)
khaki - KHAK	(P) (T)

GROUP FRIENDLY

5255

Women's
Drawstring Pant



Straight Leg

Women's Classic Fit and True-Plus Fit
100% Microfiber Poly 4-way Stretch



Flat front webbed drawstring.



Two front slant pockets with deco stitching, one cargo pocket, and one back pocket with deco stitching.



Vented bottom.

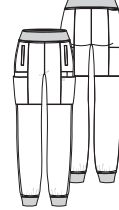
XXS - XL, Plus: 1X - 5X
Petite: XXS - XL, Plus Petite: 1X - 3X (P)
Tall: XS - XL, Plus Tall: 1X - 3X (T)
(Size M leg opening: 7 ¾")

WHIT	(P) (T)
BLAC	(P) (T)
PEWT	(P) (T)
NAVY	(P) (T)
ROYA	(P) (T)
CEIL	(P) (T)
NEW! GREY	(P) (T)
HUNT	(P) (T)
CARI	(P) (T)
TEAL	(P) (T)
NEW! GRAP	(P) (T)
WINE	(P) (T)
REDT	(P) (T)
KHAK	(P) (T)

GROUP FRIENDLY

5555

Women's
Comfort Waist Cargo Jogger Pant



Jogger Leg

Women's Modern Fit and True-Plus Fit
100% microfiber poly 4-way stretch



Dyed-to-Match knit yoga waist with interior control tie.



Two front welt pockets with runners pocket along back waist, and two roomy cargo pockets with three additional accessory pockets.



Slim leg jogger fit with knit cuff at bottom hem.

Inseam length
Regular: 28", Petite: 26", Tall: 31"

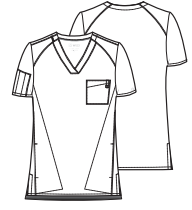
XXS - XL, Plus: 1X - 5X
Petite: XXS - XL, Plus Petite: 1X - 3X (P)
Tall: XS - XL, Plus Tall: 1X - 3X (T)
(Size M leg opening: 4 ½")

BLAC	(P) (T)
PEWT	(P) (T)
NAVY	(P) (T)
ROYA	(P) (T)
CEIL	(P) (T)
NEW! GREY	(P) (T)
HUNT	(P) (T)
CARI	(P) (T)
TEAL	(P) (T)
NEW! GRAP	(P) (T)
WINE	(P) (T)
REDT	(P) (T)

GROUP FRIENDLY

6355

Men's
V-Neck Top



Men's Modern Fit
100% Microfiber Poly 4-way Stretch



Two lower side entry pockets, one chest pocket with utility loop, and pen slot sleeve pocket.



Shoulder badge loop.



Vented sides.
Longer back length.



WonderWink silicone ring.
Embroidery friendly design.

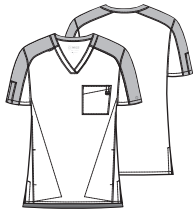
XS - 5X
(Size M length: front-29", back-30")

WHIT
BLAC
PEWT
NAVY
ROYA
CEIL
GREY
OLIV
HUNT
CARI
TEAL
GALA
NEW! GRAP
WINE
REDT
KHAK


GROUP FRIENDLY


6655


Men's
Colorblock Top




Men's Modern Fit
100% Microfiber Poly 4-way Stretch

 Two lower side entry pockets, one chest pocket with utility loop, and pen slot sleeve pocket.

 Contrast color at sleeve, shoulder, and back neckline.
Shoulder badge loop.

 Vented sides.
Longer back length.

 WonderWink silicone ring.
Embroidery friendly design.

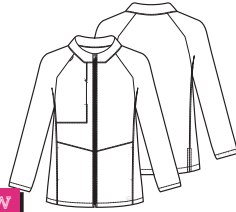
XS - 5X
(Size M length: front-29", back-30")

BLAC	PEWT
PEWT	BLAC
NAVY	PEWT
ROYA	NAVY
CEIL	NAVY

GROUP FRIENDLY

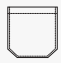
8355


Men's
Zip Front Warm Up Jacket




NEW

Men's Modern Fit
100% Microfiber Poly 4-way Stretch

 Two lower side entry pockets, one zip chest pocket.

 Zip front closure, back elastic at cuff.

Shoulder badge loop.

 Vented back.
Longer back length.

Embroidery friendly design.

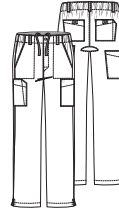
XS - 5X
(Size M length: 30 1/4")

BLAC
PEWT
NAVY
ROYA

GROUP FRIENDLY


5355

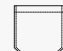
Men's
Flat Front Cargo Pant




Straight Leg

Men's Modern Fit
100% Microfiber Poly 4-way Stretch

 Flat front full elastic waist with zip fly and five belt loops. Inside webbed drawstring.

 Two front slant pockets, two stylized cargo pockets with pen slot, one cell phone pocket, and two back pockets with pen slot and hook and loop closure.

 Hidden gusset.

 Vented bottom.

XS - 5X
Short: XS - 3X **S**
Tall: S - 3X **T**
(Size M leg opening: 8 3/4")

WHIT	S T
BLAC	S T
PEWT	S T
NAVY	S T
ROYA	S T
CEIL	S T
GREY	S T
OLIV	S T
HUNT	S T
CARI	S T
TEAL	S T
GALA	S T
NEW!	GRAP S T

WINE **S** **T**

REDT **S** **T**

KHAK **S** **T**

GROUP FRIENDLY


5655

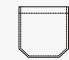
Men's
Cargo Jogger Pant




Jogger Leg

Men's Modern Fit
100% Microfiber Poly 4-way Stretch

 Full elastic waist and full drawstring with zip fly.

 Two front slash pockets, two stylized cargo pockets with cell phone pocket and pen slot, two back pockets with pen slot and hook and loop closure.

 Slim leg jogger fit with elastic cuff at bottom hem.

Inseam length
Regular: 28 1/2", Tall: 32".

XS - 5X
Tall: S - 3X **T**
(Size M leg opening: 5 3/4")

BLAC	T
PEWT	T
NAVY	T
ROYA	T
CEIL	T

NEW! CARI **T**

NEW! WINE **T**