



2021



AERO

Premium Collection

76% Polyester | 20% Rayon | 4% Spandex
Women's Modern Fit
Women's True-Plus Fit

**IT'S TIME TO SHINE!
INSPIRE YOUR DAY
WITH WONDERWINK'S
ULTRA-LUXE, FEATHER-WEIGHT
SCRUB COLLECTION.**



**6129
WOMEN'S
FLEX BACK V-NECK TOP**

WOMEN'S MODERN FIT
XXS - XL

TRUE-PLUS FIT
2XL - 5XL
(Size M length: 27 ¾")



*Available December 2020
CRCS not included GROUP assortment

- Two front lower top loading double pockets
- Dyed-to-match flat back rib knit at neck band
- Shoulder badge loop
- Shape enhancing curved princess seams
- Dyed-to-match flat back rib knit at center back
- High stretch, high recovery for supreme comfort



**6329
WOMEN'S
DOLMAN 3-POCKET TOP**

WOMEN'S MODERN FIT
XXS - XL

TRUE-PLUS FIT
2XL - 5XL
(Size M length:
front 27 ¾", back 28 ¾")



*Available December 2020
CRCS not included GROUP assortment

- One chest pocket and two invisible zip side pockets
- Dyed-to-match flat back rib at V-neck and side panels
- Dolman sleeves and shoulder badge loop
- Back box pleat for ease of movement and longer length in the back



**8129
WOMEN'S
BOMBER JACKET**

WOMEN'S MODERN FIT
XXS - XL

TRUE-PLUS FIT
2XL - 5XL
(Size M length: 25 ¾")



*Available December 2020

- Two large side entry pockets and two inner top loading pockets
- Soft rib knit cuffs
- Dyed-to-match flat back rib knit back panel for wider range of motion
- Soft rib knit crew neckline
- Shoulder badge loop
- Easy zip front closure



**5129
WOMEN'S
FLEX UTILITY
CARGO PANT**

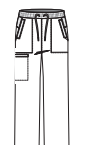
WOMEN'S MODERN FIT
XXS - XL
Petite: XXS - XL
Tall: XS - XL

TRUE-PLUS FIT
2XL - 5XL
Petite: 2XL - 3XL
Tall: 2XL - 3XL
(Size M leg opening: 8 ¾")



*Available December 2020
CRCS not included GROUP assortment

- Dyed-to-match flat back rib knit waist with full drawstring
- Two side pockets, one welt cargo pocket, and one back pocket
- Dyed-to-match flat back rib knit extension at back waist for added comfort
- Inner drawcord with a stopper at bottom hem



Straight Leg



**6429
MEN'S
KNIT PANEL V-NECK TOP**

MEN'S MODERN FIT
XS - 5XL
(Size M length: 30")

- BLAC
- CARI
- CEIL
- NAVY
- PEWT
- ROYA
- WINE



- Two side entry zip closure pockets and double chest pocket with pen slot
- Shoulder badge loop
- Dyed-to-match flat back rib knit racer back panel for wider range of motion
- Vented sides



**8229
MEN'S
BOMBER JACKET**

MEN'S MODERN FIT
XS - 5XL
(Size M length: 28")

NEW STYLE
*Available December 2020

- BLAC
- NAVY
- PEWT
- ROYA
- WINE



- Two large side entry welt pockets and two inner top loading pockets
- Soft rib knit cuffs
- Dyed-to-match flat back rib knit side panel for wider range of motion
- Soft rib knit crew neckline
- Zip pocket on sleeve for essentials
- Shoulder badge loop
- Easy zip front closure



**5329
WOMEN'S
CARGO JOGGER PANT**

WOMEN'S MODERN FIT
XXS - XL
Petite: XXS - XL
Tall: XS - XL

TRUE-PLUS FIT
2XL - 5XL
Petite: 2XL - 3XL
Tall: 2XL - 3XL
(Size M leg opening: 4 3/4")
Inseam length:
Regular: 28", Petite: 26",
Tall: 31"

- BLAC
- CARI
- CEIL
- CRCS*
- FUSA
- GRAP
- NAVY
- PEWT
- ROYA
- TEAL
- WHIT*
- WINE

*Available December 2020
CRCS not included GROUP assortment



Jogger Leg

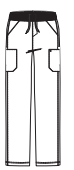
- Dyed-to-match flat back rib at bottom cuffs and waistband with full drawstring
- Two front pockets, two back pockets, two cargo pockets and one invisible pocket below waistband at the side seam



**5429
MEN'S
KNIT PANEL CARGO PANT**

MEN'S MODERN FIT
XS - 5XL
SHORT: XS - 3XL
TALL: S - 3XL
(Size M leg opening: 8 1/4")

- BLAC
- CARI
- CEIL
- NAVY
- PEWT
- ROYA
- WINE



Straight Slim Leg

- Soft knit waistband with inner drawstring and functioning fly
- Two front slash pockets, one multi cargo pocket, one cell pocket and two back patch pockets
- Knit panel inserts at upper hips for wider range of motion

WONDERWINK® AERO

Style #	6129	6329	8129	5129	5329	6429	8229	5429
Sketch								
Style	Women's Flex Back V-Neck Top	Women's Dolman 3 Pocket Top	Women's Bomber Jacket	Women's Flex Utility Cargo Pant	Women's Cargo Jogger Pant	Men's Knit Panel V-Neck Top	Men's Zip Bomber Jacket	Men's Knit Panel Cargo Pant
Sizes	XXS - 5XL	XXS - 5XL	XXS - 5XL	XXS - 5XL Petite: XXS - 3XL Tall: XS - 3XL	XXS - 5XL Petite: XXS - 3XL Tall: XS - 3XL	XS - 5XL	XS - 5XL	XS - 5XL Short: XS - 3XL Tall: S - 5XL
Fit	WM I WTP	WM I WTP	WM I WTP	WM I WTP	WM I WTP	MM	MM	MM
Collection	PREMIUM	PREMIUM	PREMIUM	PREMIUM	PREMIUM	PREMIUM	PREMIUM	PREMIUM
Pockets	4	3	4	4	7	5	3	8
Neck/Leg Style	Curved V-Neck	Curved V-Neck	Crew Neck	Straight	Jogger	V-Neck	Crew Neck	Straight Slim
Badge/Utility Loop	•	•	•	•		•	•	
Vented Sides/Bottoms						•		
Waist				DTM rib knit	DTM rib knit			DTM rib knit
Drawstring				•	•			•
Additional Features	Shape enhancing curved princess seams. DTM flat back rib back for supreme comfort.	Back pleat and flat back rib side panels for ease of movement. Zippered side entry lower pockets.	Soft rib knit cuffs. DTM flat back rib knit back panel.	Inside drawcord with stopper at bottom hem. DTM flat back rib extension at back waist.	DTM flat back rib at bottom cuffs. Invisible pocket.	DTM flat back rib at back panel. Double chest pocket and two lower zippered side entry pockets.	DTM rib knit side panel. Zippered pocket on upper sleeve. Gunmetal trims.	DTM rib knit leg panels. Functional fly. Gunmetal trims.
black - BLAC								
navy - NAVY								
pewter - PEWT								
royal - ROYA								
wine - WINE								
ceil blue - CEIL								
caribbean blue - CARI								
teal - TEAL								
grape - GRAP								
fuchsia - FUSA								
coral crush - CRCS*								
white - WHIT*	WHIT	WHIT	WHIT	WHIT	WHIT			