



# Range Catalogue

2022

|                          |         |
|--------------------------|---------|
| Womens' collection       | Page 4  |
| Men's collection         | Page 22 |
| About the EditTex fabric | Page 28 |



# The Edit Range

With the help of skilled British designers and our own detailed knowledge of the UK healthcare market, we are pleased to launch the Kara Edit range, bringing boutique fashion styling to freshen up your workday!

This range comprises of highly functional, designer scrubs and workwear for busy health & wellness professionals.

Kara was established in 2016, with the goal of bringing premium scrubs to the UK market. We've developed our own range of workwear to provide you with stylish and highly practical uniforms.

#### **ALTHOUGH STYLE IS VITAL, FIT COMES FIRST**

The Kara Edit range is constructed to be flattering for all body shapes, with panelling and tapering on tops to accentuate the waist on female styles and a perfect balance between form-fitting and comfort on the male lines.

Trims such as multiple types of unique pockets, exposed zips, and embroidered & stitched details, lift comfortable, functional workwear garments into some delightfully different, designer scrubs.

Styled by a talented British fashion designer, the Kara Edit range of scrub sets for women are designed to provide flattering fits for all body shapes, with panelling and tapering on tops to accentuate the waist. Trims such as different types of pockets, exposed zips and self-coloured embroidery, lift a comfortable functional workwear garment into something delightfully different.





# Women's Collection



**Product code:** SS211  
**Sizes:** XS, S, M, L, XL

 **Edit**  
by K A R A



# N°. 1

# Amor Zip Top



# Nº. 1 Amor Zip Top

(amor - love)

The Amor top features a flattering v-neck and an elegant gold zip to the chest. The fitted waistline has matching gold snaps on both sides to create a seamless finish. Pleats below the waist hide two handy side pockets. The layered sleeve design provides some additional freedom to move easily during your most active days at work.

## Product details

V-neck style top with front gold zip, fitted waist and pleats with hidden side pockets. Gold Rose logo print to neckline. Hidden mesh coin pocket. Layered sleeves for extra movement. Biodegradable & compostable packaging.

## Fabric & care

EditTex fabric with water resist finish



Warm Wash



Easy Iron



Cool Tumble



Water Resistant



Motion Stretch



Breathable



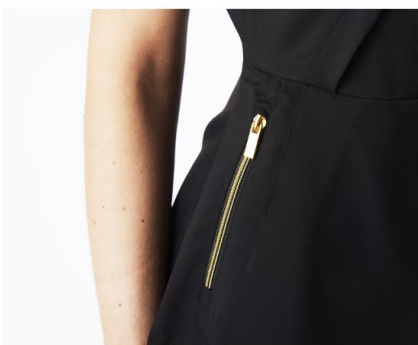
**Product code:** SS212  
**Sizes:** XS, S, M, L, XL

 **Edit**  
by K A R A



# N°. 2 Novus Asymmetric Top





# Nº. 2 Novus Asymmetric Top

(**novus** - new)

The Novus top has an innovative asymmetrical design that features a hidden neckline zip and a wrap-over front hem. Gold trims on the front and side pocket zips add a wow factor to your workday wardrobe. The layered sleeve design increases comfort while providing additional freedom of movement. The back of the top features an elasticated panel at the waist to flatter your figure.

## Product details

Asymmetric top with neckline zip, fitted waist and side pockets. Elasticated back and layered sleeves for easy movement. Branded hashtag print to concealed layered hemline. Biodegradable & compostable packaging.

## Fabric & care

EditTex fabric with water resist finish



Warm Wash



Easy Iron



Cool Tumble



Water Resistant



Motion Stretch



Breathable



10

**Product code:** SS210  
**Sizes:** XS, S, M, L, XL

 **Edit**  
by K A R A



N°. 3  
Motus Relaxed Top



# Nº. 3 Motus Relaxed Top

(**motus** - motion)

The Motus top has a unique, relaxed styling to ensure you remain in maximum comfort while working. The top features a flattering v-neckline, smooth drop shoulder style and raglan sleeves. On the front there are multiple pockets on both sides, providing plenty of storage for workday essentials. The small side vents enable a greater degree of movement, useful when constantly in motion!

## Product details

Classic relaxed shape top with v-neck, raglan sleeves and top-stitch details. Multi-pockets for added functionality.. Hidden mesh coin pocket. Biodegradable & compostable packaging.

## Fabric & care

EditTex fabric with water resist finish



Warm Wash



Easy Iron



Cool Tumble



Water Resistant



Motion Stretch



Breathable



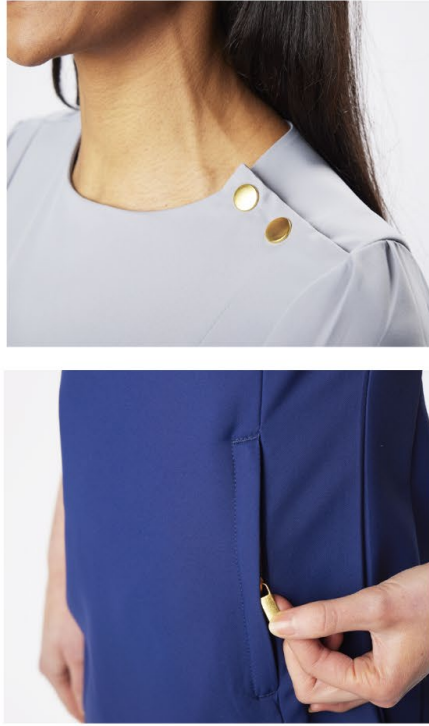
12

 **Edit**  
by K A R A

**Product code:** SS213  
**Sizes:** XS, S, M, L, XL



N°. 4  
Vita Tunic



# Nº. 4 Vita Tunic

(vita - life)

The Vita Tunic has a clean, round neckline and features bold feature gold snaps on one shoulder. The layered sleeve design provides luxurious freedom of movement in this elegant beauty tunic. The Vita tunic is shaped to be fitted at the waist, featuring one chest pocket & two lower zipped pockets. The gold trims on the central long back zip and the two side pocket zips add a flash of glamour to your working wardrobe.

## Product details

Stylish beauty tunic with gold shoulder snaps, zipped pockets & long gold zip at the back. Layered sleeves provide additional movement. Biodegradable and compostable packaging.

## Fabric & care

EditTex fabric with water resist finish



Warm Wash



Easy Iron



Cool Tumble



Water Resistant



Motion Stretch



Breathable



14

**Product code:** SS216  
**Sizes:** XS, S, M, L, XL

 **Edit**  
by K A R A



N°. 5

Magna Trousers

NEW!

15



# Nº. 5 Magna Joggers

(magna - great)

The Magna joggers are great for any workday, but ideal for those crazy days when you're on your feet all shift long. The tapered leg and elasticated trouser cuffs ensure a flattering shape while maintaining maximum comfort. The elasticated waistband with drawcord is easy to wear and fit snugly around the body. There are also loads of pockets, including two zipped thigh pockets for anything you want to securely carry with you. There's also a handy ID tag loop at the waist.

## Product details

High quality women's motion-stretch jogger scrubs. Tapered leg, elasticated cuffs . Multiple pockets including 2 zipped pockets & ID tag loop. Flecked gold drawcords with branded gold end. Elasticated waistband. Back pockets with tonal logo embroidery. Biodegradable & compostable packaging.

## Fabric & care

EditTex fabric with water resist finish



Warm Wash



Easy Iron



Cool Tumble



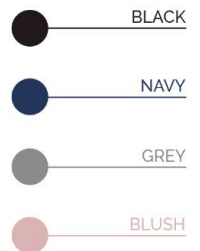
Water Resistant



Motion Stretch



Breathable



16

**Product code:** SS214  
**Sizes:** XS, S, M, L, XL

 **Edit**  
by K A R A



# N°. 6 Opus Cargo Trousers





# Nº. 6 Opus Cargo Trousers

(opus - work)

The Opus trousers are our unique take on the classic cargo scrubs trousers with a laser-focus on fit, functionality, & comfort. The waistband is elasticated at the back with a stylish drawcord at the front, whilst maintaining a professional look. There are 8 pockets including a special multi-pocket design at the hip. If you carry scissors at work, you'll love our safe scissor pocket & there's also a handy ID tag loop at the waist.

## Product details

Classic straight leg styled cargo scrub pants with pockets, including multi-pocket design, scissor pocket & ID tag loop. Flecked gold drawcords with branded gold end. Elasticated waistband. Back pockets with tonal logo embroidery. Biodegradable & compostable packaging.

## Fabric & care

Edit.Tex fabric with water resist finish



Warm Wash



Easy Iron



Cool Tumble



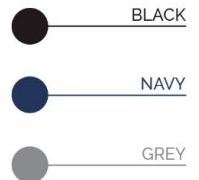
Water Resistant



Motion Stretch



Breathable



18

**Product code:** SS215  
**Sizes:** XS, S, M, L, XL

 **Edit**  
by K A R A



# N°. 7 Fortis Tailored Trousers



# Nº. 7 Fortis Tailored Trousers

(fortis - brave)

The Fortis tailored trouser is our sharpest look yet. These tailored slim-fit workwear trousers have a zip fly front and mock pleats for a unique, business-chic style. For great function and fit, there is a hidden elasticated sections to both sides. There are multiple functional pockets on the front & back while still maintaining a form-fitting look. There's also a handy ID tag loop at the waist.

## Product details

Tailored slim fit workwear trousers with zip fly front & hidden elasticated waist on both sides. Multiple pockets & ID tag loop. Small side split to trouser leg hems. Biodegradable & compostable packaging.

## Fabric & care

EditTex fabric with water resist finish



Warm Wash



Easy Iron



Cool Tumble



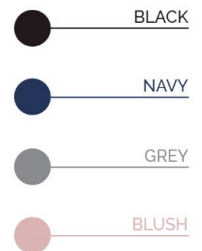
Water Resistant



Motion Stretch



Breathable



20

**Product code:** SS217  
**Sizes:** XS, S, M, L, XL

 **Edit**  
by K A R A



N°. 8

Animus Leggings



# Nº. 8 Animus Leggings

(**animus** - courage)

The Animus Leggings have a high-rise, smooth waistband and are designed to be worn underneath the Vita Tunic or pair with one of the other Kara Edit workwear tops. Also great for the gym or yoga if you don't have time to change! Features a useful mobile phone pocket on the right thigh.

● BLACK

## Product details

High rise, skinny fit uniform leggings that are moisture wicking & water resistant finish. Drop-in phone pocket to thigh.. Gold Rose logo print to leg hem. Biodegradable & compostable packaging.

## Fabric & care

100% polyester fabric with water resist finish.



Warm Wash



Easy Iron



Cool Tumble



Water Resistant



Motion Stretch



Breathable

Styled by a talented British fashion designer, the Kara Edit range of mens scrubs is designed to provide you with high quality, durable workwear. Trims such as different types of pockets, handy ID tags lift an ordinary workwear garment into something delightfully different. Splash proof material guarantees you still look sharp whatever the situation.





# Men's Collection

24

**Product code:** SS220  
**Sizes:** XS, S, M, L, XL

 **Edit**  
by K A R A



N°. 9  
Utilis Top



NEW!

25



# Nº. 9 Utilis Top

(utilis - helpful)

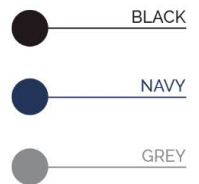
The Utilis mens scrub tops have a modern V-neck shape and short sleeves. On the front there are multiple pockets on both sides including hidden, side-entry hip pockets for easy access.

## Product details

V-neck top thoughtfully designed with practical and useful pocket details to simplify your workday.. Biodegradable & compostable packaging.

## Fabric & care

EditTex fabric with water resist finish



Warm Wash



Easy Iron



Cool Tumble



Water  
Resistant



Motion  
Stretch



Breathable

26

**Product code:** SS221  
**Sizes:** XS, S, M, L, XL

 **Edit**  
by K A R A



Nº. 10

Ordo Cargo Trousers



# Nº. 10 Ordo Cargo Trousers

(**ordo** - organisation)

Ordo men's scrubs trousers are a relaxed fit and highly functional with extreme comfort and all-day performance built in as standard. The waistband is elasticated at the back with a stylish drawcord at the front for easy-on fitting. There are numerous pockets & a handy ID tag at the waist.

## Product details

Elasticated waistband and drawcord at the front. Six pockets including a multi-pocket. Reflective flecked drawcords with branded end. Elasticated waistband. Biodegradable & compostable packaging.



## Fabric & care

EditTex fabric with water resist finish



Warm Wash



Easy Iron



Cool Tumble



Water Resistant



Motion Stretch



Breathable

# Fabric Guide:



Our customers tell us that they shop at Kara for something a bit different. Break the mould from the traditional boxy scrubs or bland workwear uniform!

**Group Orders**

Ordering for a team? Speak with our customer services team.

**Sample Service**

Try before you buy! Request a sample pack.

# EditTex

## What is EditTex?

The EditTex fabric is ideal for work durability, while providing exceptional comfort and functionality. It is wrinkle resistant, water resistant and has motion-stretch for added comfort. Taking care of your Kara designer scrubs is easy, as the fabric is recommended washable on a warm cycle and has been tested to thermal disinfection temperatures.

There's no need to iron, but iron on a cool setting if you want to. They can be tumble dried on cool if you're in a hurry, but also dry within minutes on the line.

We also branched out in our testing to unique scenarios, for example: vets will love that our fabric is pet hair friendly, with both cat and dog hair easily brushed off. The right fabric is the bedrock of any exceptional workwear range, and we hope you like it as much as we do!





# KARA

FIT FOR WORK



Tel: (+44) 1484 508302 | [info@karagroup.co.uk](mailto:info@karagroup.co.uk) | [www.karagroup.co.uk](http://www.karagroup.co.uk)