



ETHICALLY SOURCED
SUSTAINABLE FASHION

RENEW

Premium Collection

49% Polyester / 46% Recycled Polyester /
5% Spandex

Women's Modern Fit
Women's True-Plus Fit
Men's Modern Fit



Each garment recycles five water bottles
and is combined with spandex to create a
flexible, feel-good fabric.



Wear-tested for quality and durability.
Hassle-free maintenance.



RENEW packaging is biodegradable and
will return to nature in half a year.



Our hang tags are printed on
environmentally-friendly, socially
responsible, FSC certified paper.



Together, we can make a difference.

LET'S BE KIND TO OUR PLANET



SCAN FOR
PRODUCT VIDEOS

FASHION



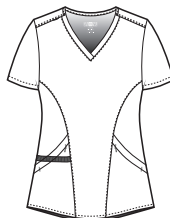
**6134
WOMEN'S
V-NECK TOP**

WOMEN'S MODERN FIT
XS - 2XL

(Size M length: 27 ¼")

BLAC CEIL
WINE NAVY
ROYA

- Flattering curved V-Neck
- Top loading pockets with two double invisible zip pockets; four total
- Grosgrain multi accessory loops inside wearer's right pocket
- Shoulder badge loop
- Shape enhancing princess seams
- Curved hem



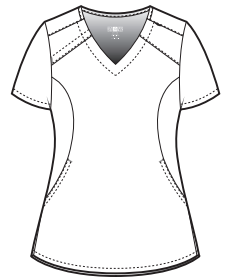
**6234
WOMEN'S
EZ-ZIP TOP**

WOMEN'S MODERN FIT
XS - 2XL

(Size M length: 27 ¼")

BLAC CEIL
GRHT NAVY
WINE ROYA

- Flattering curved V-Neck
- Hidden zipper opening at shoulder for easy, minimal contact removal
- Two curved front side pockets, two back pockets
- Shoulder badge loop
- Shape enhancing curved princess seams
- Curved hem



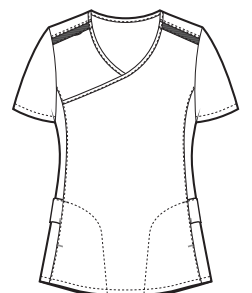
**6334
WOMEN'S
MOCK WRAP TOP**

WOMEN'S MODERN FIT
XS - 2XL

(Size M length: 27 ¼")

GRHT NAVY WINE

- Feminine Y-Neck
- Two sleek side pockets, two side entry pockets
- Grosgrain trim at shoulder with badge loop
- Shape enhancing princess seams
- Embroidery friendly design



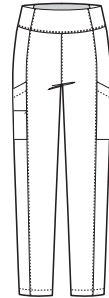


5134
**WOMEN'S
HIGH WAIST POWER PANT**

WOMEN'S MODERN FIT
XS - 2XL

(Size M leg opening: 5 3/4",
Inseam: 28 1/2"(regular)

BLAC CEIL
GRHT NAVY
WINE ROYA



Slim Leg

- Waistband lined with power mesh for tummy control
- Slim, sleek leg
- Pewter power mesh at back waistband for extra support and stretch
- Two curved side slim cargo pockets - Left side has grosgrain multi-accessory loops. Wearer's right side has extra small essential pocket with invisible zipper

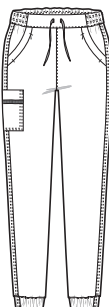


5234
**WOMEN'S
JOGGER PANT**

WOMEN'S MODERN FIT
XS - 2XL

(Size M leg opening: 5 1/4",
Inseam: 28 1/2"(regular),

BLAC CEIL
GRHT NAVY
WINE ROYA



Jogger Leg

- Mid-rise flat front, elasticized back, pull-on waist with grey heather drawstring
- Front curved side pockets, double invisible zip pockets
- Wearer's right side cargo pocket with grosgrain multi-accessory loops, two back patch pockets
- Self-fabric elasticized bottom cuffs



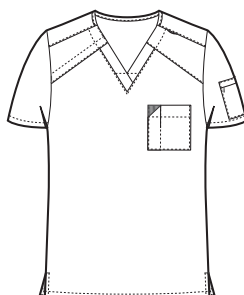


6034
**MEN'S
EZ ZIP TOP**

MEN'S MODERN FIT
XS - 2XL
(Size M length: 30")

BLAC GRHT
ROYA WINE

- V-Neck with hidden zipper opening at shoulder for easy, minimal contact removal
- Chest pocket with grosgrain trim and dedicated pen slot
- Sleeve pocket on wearer's left with invisible zip closure
- Shoulder badge loop
- Back yoke with locker loop
- Side vents

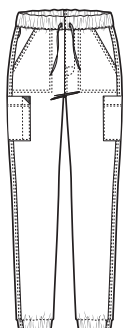


5034
**MEN'S
JOGGER PANT**






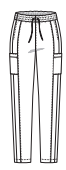


MEN'S MODERN FIT
XS - 2XL
(Size M leg opening: 5 1/2",
Inseam: 28 1/2"(regular), 26 1/2"

BLAC GRHT
ROYA WINE

- Mid-rise fully elasticized pull-on waist with grey heather drawstring
- Two front slash side pockets and two back patch pockets with hook & loop closure. Wearer's right has additional small essential pocket
- Wearer's right side cargo pocket with grosgrain multi-accessory loops
- Badge loop
- Self-fabric elasticized bottom cuffs



Jogger Leg

Style #	6134	6234	6334	5134	5234	NEW 5334*	6034	5034
Sketch								
Style	Women's V-Neck Top	Women's EZ-Zip Top	Women's Wrap Top	Women's High Waist Power Pant	Women's Jogger Pant	Women's High Waist Slim Leg Pant	Men's EZ Zip Top	Men's Jogger Pant
Sizes	XS - XL Plus: 1X - 3X	XS - XL Plus: 1X - 3X	XS - XL Plus: 1X - 3X	XS - XL Plus: 1X - 3X Petite: XS - XL Plus Petite: 1X - 3X Tall: XS - XL Plus Tall: 1X - 3X	XS - XL Plus: 1X - 3X Petite: XS - XL Plus Petite: 1X - 3X	XS - XL Plus: 1X - 3X Petite: XS - XL Plus Petite: 1X - 3X Tall: XS - XL Plus Tall: 1X - 3X	XS - 3XL	XS - 3XL Short: XS - 3XL Tall: S - 3XL
Fit	WM WTP	WM WTP	WM WTP	WM WTP	WM WTP	WM WTP	MM	MM
Collection	PREMIUM	PREMIUM	PREMIUM	PREMIUM	PREMIUM	PREMIUM	PREMIUM	PREMIUM
Pockets	4	4	4	3	7	5	3	7
Neck/Leg Style	V-Neck	V-Neck	Y-Neck	Slim	Jogger	Straight Slim	V-Neck	Jogger
Badge/ Utility Loop	•	•	•	•	•		•	•
Vented Sides/ Bottoms						•	•	
Waist				Waistband with power mesh back	Pull-on waist, elasticized back	Full elastic		Full elasticized pull-on
Drawstring				Interior control tie	Drawstring	Drawstring		Drawstring
Additional features	Grosgrain multi accessory loops. Shape enhancing princess seams. Curved hem.	Hidden zipper opening at shoulder. Shape enhancing curved princess seams. Curved hem.	Embroidery friendly design. Grosgrain trim at shoulder. Shape enhancing princess seams.	Pewter power mesh at back waistband. Grosgrain multi-accessory loops	Grosgrain multi-accessory loops. Self-fabric elasticized bottom cuffs.	High waisted style. Invisible zip cargo pockets. Elongating seaming details.	Hidden zipper. Dedicated pen slot. Back yoke with locker loop.	Grosgrain multi-accessory loops. Self-fabric elasticized bottom cuffs.
black - BLAC	BLAC	BLAC	BLAC	BLAC	BLAC	BLAC	BLAC	BLAC
pewter - PEWT	PEWT	PEWT	PEWT	PEWT	PEWT	PEWT	PEWT	PEWT
navy - NAVY	NAVY	NAVY	NAVY	NAVY	NAVY	NAVY	NAVY	NAVY
royal - ROYA	ROYA	ROYA	ROYA	ROYA	ROYA	ROYA	ROYA	ROYA
ciel blue - CEIL	CEIL	CEIL	CEIL	CEIL	CEIL	CEIL	CEIL	CEIL
bay blue - BAYB	BAYB	BAYB	BAYB	BAYB	BAYB	BAYB		
olive - OLIV	OLIV	OLIV	OLIV	OLIV	OLIV	OLIV	OLIV	OLIV
wine - WINE	WINE	WINE	WINE	WINE	WINE	WINE	WINE	WINE
clay - CLAY	CLAY	CLAY	CLAY	CLAY	CLAY	CLAY		
Grey Heather - GRHT	GRHT	GRHT	GRHT	GRHT	GRHT	GRHT	GRHT	GRHT

*New style available December 2021.