



EXPECT THE UNEXPECTED

# WONDERFLEX®

## Fashion Collection

52 % Cotton | 45% Polyester | 3% Spandex

Women's Modern Fit

Women's True-Plus Fit

Fashion-forward collection packed with eye-catching details like triple-needle stitching and contrast color accents.

A fan favorite!



SCAN FOR  
PRODUCT VIDEOS

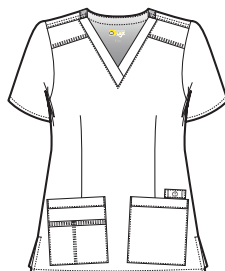




**6108  
VERITY  
WOMEN'S  
V-NECK TOP**

WOMEN'S MODERN FIT  
XS - 2XL

(Size M length: 27 1/4")



- Two front lower tilted patch pockets including one WonderWink signature triple pocket
- Triple-needle stitching at the dropped shoulder
- Two front body darts for superior shaping
- WonderFLEX LE badge above wearer's left pocket
- Vented sides



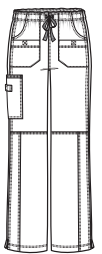
**5108  
FAITH  
WOMEN'S MULTI POCKET CARGO PANT**

WOMEN'S MODERN FIT  
2S - 2XL  
PETITE: XS - 2XL  
TALL: XS - 2XL

(Size M leg opening: 10")



- Full elastic waist with full webbed drawstring
- Four front pockets including two lower tossed pockets with hook-and-loop fastener, one cargo pocket, and one back pocket with mock dart and signature ID bungee loop Triple-needle stitching at pocket openings
- WonderFLEX LE badge at cargo pocket
- Double-needle stitching at knee, side seams, and along front seams adds extra durability
- Vented bottom



Boot Cut



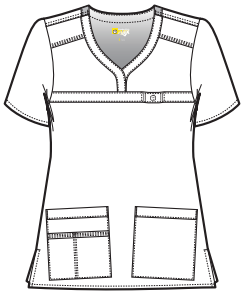
6208  
**PATIENCE**  
**WOMEN'S**  
**CURVED NOTCH-NECK TOP**

WOMEN'S MODERN FIT  
XS - 2XL

(Size M length: 27 ¾")



- Two front lower tilted patch pockets including one WonderWink signature triple pocket
- Triple-needle stitching at the dropped shoulder
- Curve shaped neck facing overlaps at center front
- Banded front yoke with WonderFLEX LE badge at wearer's left chest
- Vented sides



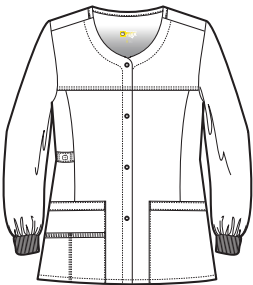
8108  
**CONSTANCE**  
**WOMEN'S**  
**SNAP JACKET**

WOMEN'S MODERN FIT  
XS - 2XL

(Size M length: 27 ¾")



- Two front lower pockets including one WonderWink signature triple pocket
- Curved front neckline
- Front yoke with two front princess seams gives subtle tailoring to the jacket
- WonderFLEX LE badge at wearer's right waist
- Rib-knit cuff







**5308**  
**GRACE**  
**WOMEN'S FLARE LEG CARGO PANT**

WOMEN'S MODERN FIT

XS - 2XL

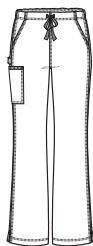
PETITE: XS - 2XL

TALL: XS - 2XL

(Size M leg opening: 10 ¾")



- Back elastic waist with full webbed drawstring
- Two front pockets, one cargo, and one back pocket with mock dart and signature ID bungee loop at top corner
- Triple-needle stitching at front pocket openings
- WonderFLEX LE badge at wearer's right side
- Double-needle stitching at side seams adds extra durability
- Vented bottom



Flare Leg



**5908**  
**LOVE**  
**WOMEN'S UTILITY CARGO ZIP JOGGER PANT**

WOMEN'S MODERN FIT

XS - 2XL

(Size M leg opening: 5 ¼")

**Inseam length**  
Regular : 30"






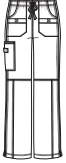




- Fully constructed waistband with rib knit, zipper and snap button closure
- Two zipper closure front pockets, two large cargo pockets, one accessory pocket, and one back pocket
- WonderFLEX LE badge at wearer's right side
- Elasticized hem with zipper at back seam



Jogger Leg



Style #	6108	6118	6208	8108	8908	5108	5308	5908
Sketch								
Style	Verity Women's V-Neck Top	Friendship Women's Henley Top	Patience Women's Curved Notch-Neck Top	Constance Women's Snap Jacket	Serenity Women's Utility Zip Fashion Vest	Faith Women's Multi Pocket Cargo Pant	Grace Women's Flare Leg Cargo Pant	Love Women's Utility Cargo Zip Jogger Pant
Sizes	2XS - 5XL	XS - 3XL	2XS - 5XL	XS - 3XL	XS - 3XL	2XS-5XL Petite: 2XS-3XL Tall: XS-3XL	2XS-5XL Petite: 2XS-3XL Tall: XS-3XL	XS-3XL Petite: XS-3XL Tall: XS-3XL
Fit	WM I WTP	WM I WTP	WM I WTP	WM I WTP	WM I WTP	WM I WTP	WM I WTP	WM I WTP
Pockets	4	3	4	4	8	6	4	6
Neck/Leg Style	V-Neck	Henley neckline	Curved Notch-Neck	Crew Neck	Cadet Collar	Boot Cut	Flare Leg	Jogger Leg
Badge/Utility Loop	•	•	•	•	•	•	•	•
Vented Sides/Bottoms	•	•		•	•	•	•	Zipper vent
Waist					Adjustable	Full elastic	Back elastic	DTM back rib knit back elastic
Drawstring					Drawstring	Drawstring	Drawstring	
Additional Features	Triple-needle stitching at the dropped shoulder. Vented sides.	Two button curved neck. WonderWink signature triple pocket.	Triple-needle stitching at the dropped shoulder. Curve shaped neck facing overlaps.	Front yoke with two front princess seams. Rib-knit cuff.	Inside mesh pocket for cell phone. Princess seaming. Internal bungee cord.	Double-needle stitching at knee, along front seams.	Triple-needle stitching at front pocket openings. Double-needle stitching at side seams.	Zipper and snap button closure. Two zipper closure front pockets. Elasticized bottom jogger hem.
true white - TWH	TWH		TWH	TWH		TWH	TWH	TWH
black - BLK	BLK	BLK	BLK	BLK	BLK	BLK	BLK	BLK
pewter - PEW	PEW	PEW	PEW	PEW	PEW	PEW	PEW	PEW
navy - NVY	NVY	NVY	NVY	NVY	NVY	NVY	NVY	NVY
royal - RYL	RYL	RYL	RYL	RYL		RYL	RYL	RYL
ceil blue - CBL	CBL		CBL			CBL	CBL	CBL
caribbean blue - CRB	CBR		CBR			CBR	CBR	CRB
hot pink - HPK	HPK		HPK			HPK	HPK	
rose blush - RBS	RBS*	RBS	RBS*			RBS*	RBS*	RBS
wine - WIN	WIN		WIN			WIN	WIN	WIN
papaya - PYA	PYA		PYA			PYA	PYA	
charcoal - CHA	CHA	CHA	CHA			CHA	CHA	CHA
green apple - GAP	GAP		GAP			GAP	GAP	
hunter - HTR	HTR		HTR			HTR	HTR	
aqua - AQU	AQU		AQU			AQU	AQU	
real teal - RTL	RTL		RTL			RTL	RTL	
ocean - OCN	OCN*		OCN*			OCN*		OCN
malibu blue - MBL	MBL		MBL			MBL	MBL	
galaxy blue - GBL	GBL		GBL			GBL	GBL	
grape - GRP	GRP		GRP			GRP	GRP	

\*OCN, RBS available XS - 3XL, Petite XS - 3XL only